



Light Efficiency:

54 Lumen/Watt

Light Quality:

CRI: 89.7

Color Temperature:

4443 K

Output: 1604 lm

Peak: 7271 cd

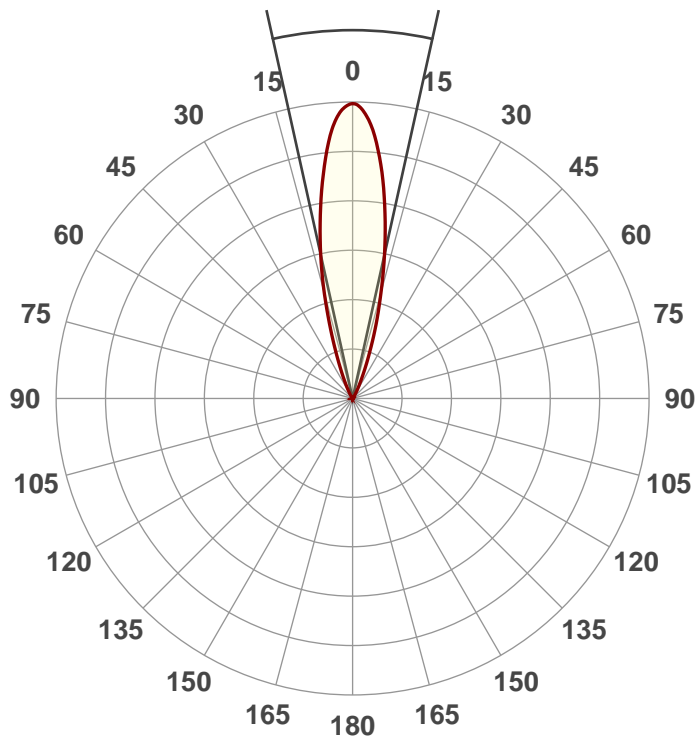
Power: 29.8 W

PF: 0.62



Beam Angle

25°



Product Name:

UB 9H

Test:

CRI Value

Date:

4/20/2018

Note:

R @ 90

G @ 219

B @ 0

W @ 255

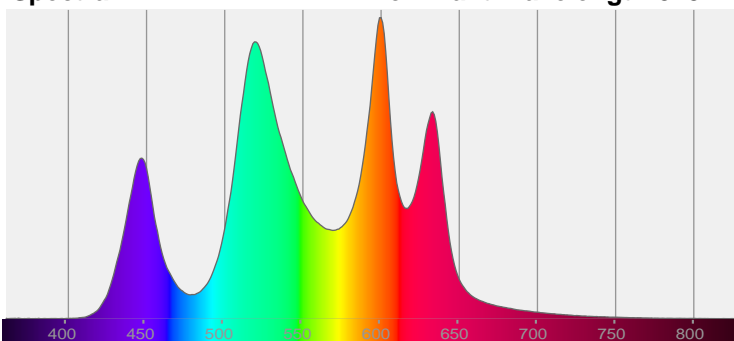
A @ 255



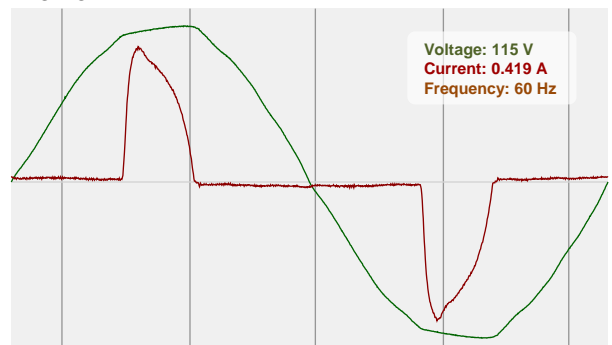
CIE 1931
x: 0.372
y: 0.411

Spectra

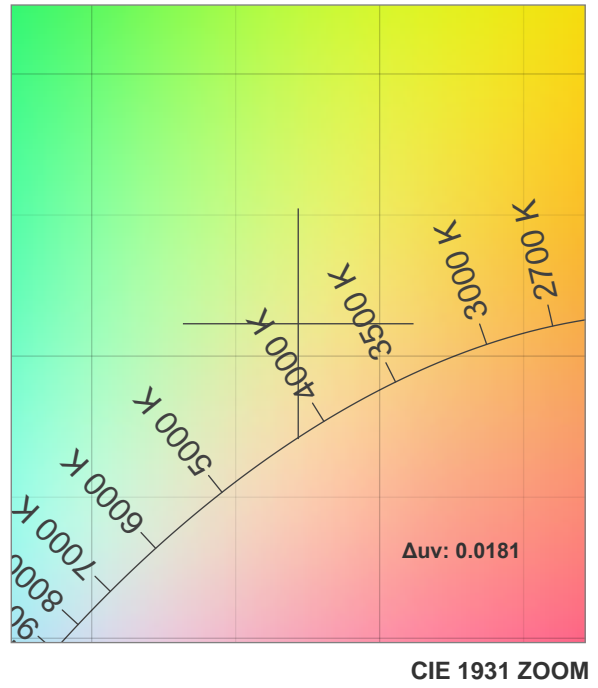
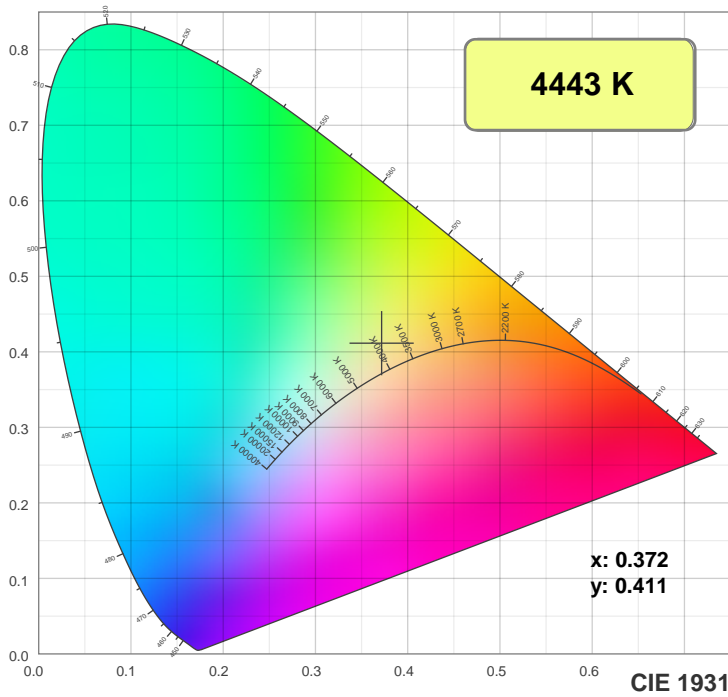
Dominant Wavelength: 573nm



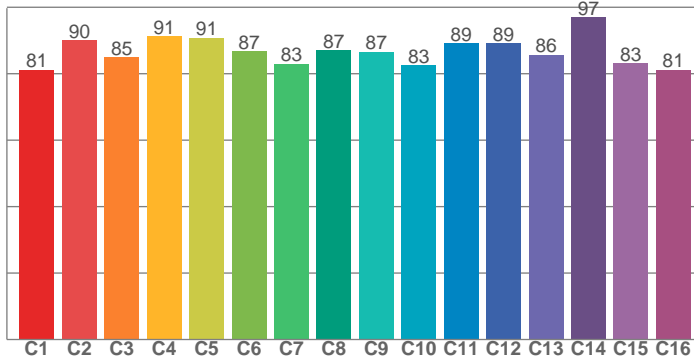
Power



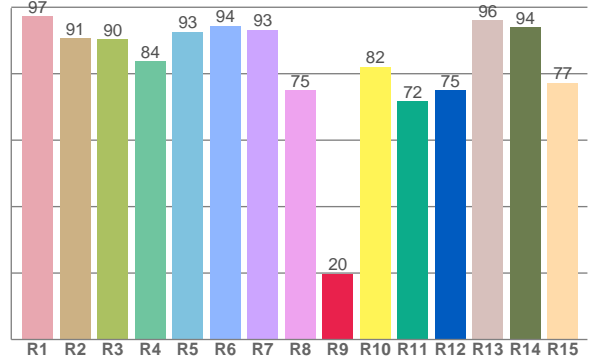
Color Details



TM30: 86.6



CRI: 89.7 (R1-R8)



CRI R values, only R1-R8 are used to calculate final CRI value

R1	R2	R3	R4	R5	R6	R7	R8	R9	R10	R11	R12	R13	R14	R15
97.2	90.7	90.3	83.8	92.6	94.4	93.2	75.0	19.9	82.2	71.7	75.1	96.1	94.1	77.3

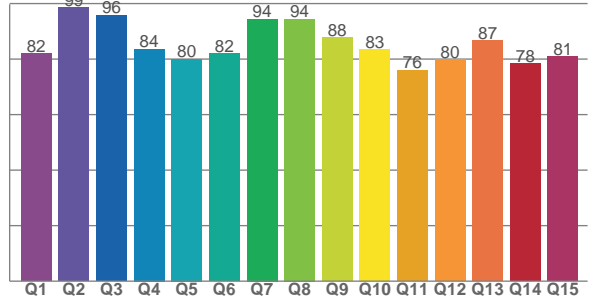
TM30 C values, 16 binned values out of total of 99 C values

C1	C2	C3	C4	C5	C6	C7	C8	C9	C10	C11	C12	C13	C14	C15	C16
81.2	90.0	84.9	91.2	90.8	86.7	83.0	87.0	86.5	82.5	89.1	89.1	85.7	97.0	83.2	81.2

CQS Q values

Q1	Q2	Q3	Q4	Q5	Q6	Q7	Q8	Q9	Q10	Q11	Q12	Q13	Q14	Q15
82.0	98.5	95.8	83.6	80.1	82.1	94.4	94.4	87.8	83.5	76.0	79.8	86.7	78.4	80.8

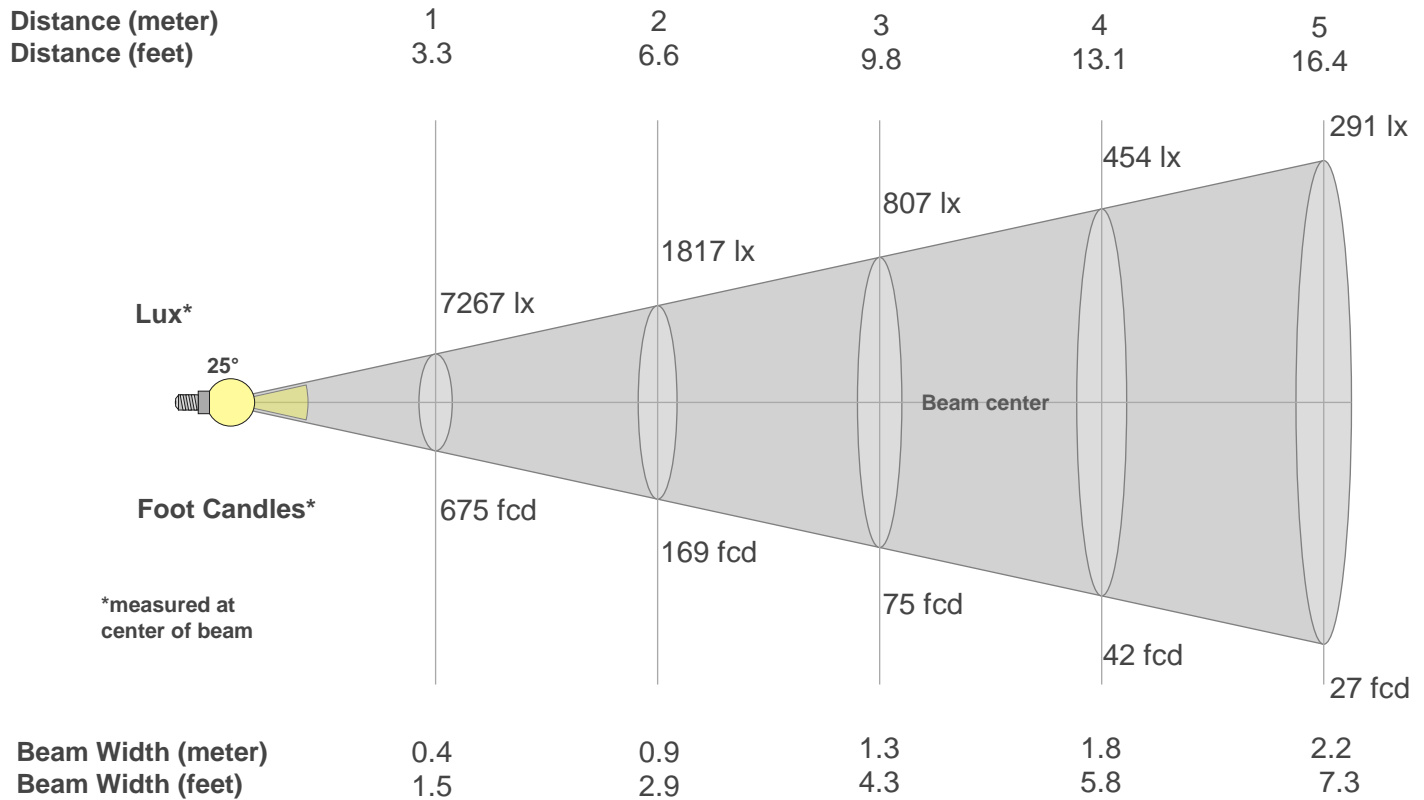
CQS: 84.1



Color Parameters

Color Temperature	Color Rendering Index	Red Component	Color Fidelity	Color Gamut	Color Quality Scale	Color Coordinate CIE 1931	Color Coordinate CIE 1931	Color Coordinate	Color Coordinate	Color Deviation from Black Body
CCT	CRI	CRI R9	TM30 Rf	TM30 Rg	CQS	x	y	u	v	Δuv
4443 K	89.7	19.9	86.6	100.7	84.1	0.372	0.411	0.207	0.343	0.0181

Beam Details



Beam Intensities from 1-20m

m	1	2	3	4	5	6	7	8	9	10	11	12	13	14	15	16	17	18	19	20
ft	3.3	6.6	9.8	13.1	16.4	19.7	23	26.2	29.5	32.8	36.1	39.4	42.7	45.9	49.2	52.5	55.8	59.1	62.3	65.6
lx	7267	1817	807	454	291	202	148	114	90	73	60	50	43	37	32	28	25	22	20	18
fcd	675.1	168.8	75	42.2	27	18.8	13.8	10.5	8.3	6.8	5.6	4.7	4	3.4	3	2.6	2.3	2.1	1.9	1.7

Intensities in 0° C-plane

0°	2°	4°	6°	8°	10°	12°	14°	16°	18°	20°	22°	24°	26°	28°	30°	32°	34°	36°	38°
7267	7134	6754	6120	5367	4588	3826	3077	2332	1685	1172	798	539	353	229	150	105	72	56	42
100%	98%	93%	84%	74%	63%	53%	42%	32%	23%	16%	11%	7%	5%	3%	2%	1%	1%	1%	1%

Intensities in 90° C-plane

0°	2°	4°	6°	8°	10°	12°	14°	16°	18°	20°	22°	24°	26°	28°	30°	32°	34°	36°	38°
7267	7134	6754	6120	5367	4588	3826	3077	2332	1685	1172	798	539	353	229	150	105	72	56	42
100%	98%	93%	84%	74%	63%	53%	42%	32%	23%	16%	11%	7%	5%	3%	2%	1%	1%	1%	1%

Intensities in 180° C-plane

0°	2°	4°	6°	8°	10°	12°	14°	16°	18°	20°	22°	24°	26°	28°	30°	32°	34°	36°	38°
7267	7115	6719	6111	5397	4606	3828	3070	2379	1796	1272	879	586	391	260	170	110	73	54	42
100%	98%	92%	84%	74%	63%	53%	42%	33%	25%	18%	12%	8%	5%	4%	2%	2%	1%	1%	1%

Intensities in 270° C-plane

0°	2°	4°	6°	8°	10°	12°	14°	16°	18°	20°	22°	24°	26°	28°	30°	32°	34°	36°	38°
7267	7115	6719	6111	5397	4606	3828	3070	2379	1796	1272	879	586	391	260	170	110	73	54	42
100%	98%	92%	84%	74%	63%	53%	42%	33%	25%	18%	12%	8%	5%	4%	2%	2%	1%	1%	1%

Beam Angle 50%	Field Angle 10%	Cutoff Angle 2,5%	Intensity Ratio in 120° Cone	Intensity Ratio in 90° Cone
25°	45.4°	58.8°	98.9%	98.1%